

**Diamond Frankfurt Abrasive for Processing Marble Slab TW21**

**大理石大板金刚石马蹄**

**TW2111 Metal (胶木金刚马蹄) :**



Grit (目数)	#36#46 #60 #120#180#240#320#400#500#800
Segment Size (刀头尺寸)	20×20×10/34×10×10/24×10×10mm
Type (类型)	H (耐磨) /M (通用) /S (锋利)
Segment Type (刀头安装方式)	Glue injection (注胶)
Base	Synthetic resin (树脂)

**TW2121 Metal (铝底金刚马蹄) :**



Grit (目数)	#36#46 #60 #120#180
Segment Size (刀头尺寸)	H6
Type (类型)	H (耐磨) /M (通用) /S (锋利)
Segment Type (刀头安装方式)	M8 screw installation (M8螺丝安装)
Base	Aluminium (铝底)

**TW2122 Metal (铁底金刚马蹄) :**



Grit (目数)	#36#46 #60 #120#180
Segment Size (刀头尺寸)	H6
Type (类型)	H (耐磨) /M (通用) /S (锋利)
Segment Type (刀头安装方式)	M8 screw installation (M8螺丝安装)
Base	Iron (铁底)

**TW2131 Metal (斜齿金刚马蹄) :**



Grit (目数)	#36#46 #60 #120#180
Segment Size (刀头尺寸)	24×10×10mm
Type (类型)	H (耐磨) /M (通用) /S (锋利)
Segment Type (刀头安装方式)	Welding (焊接)
Base	Iron (铁底)

**TW2132 Metal (直齿金刚马蹄) :**



Grit (目数)	#36#46 #60 #120#180
Segment Size (刀头尺寸)	24×10×10mm
Type (类型)	H (耐磨) /M (通用) /S (锋利)
Segment Type (刀头安装方式)	Welding (焊接)
Base	Iron (铁底)

**TW2133 Metal (圆齿金刚马蹄) :**



Grit (目数)	#36#46 #60 #120#180
Segment Size (刀头尺寸)	φ20×10mm
Type (类型)	H (耐磨) /M (通用) /S (锋利)
Segment Type (刀头安装方式)	Welding (焊接)
Base	Iron (铁底)

**TW2134 Metal (S型金刚马蹄) :**



Grit (目数)	#36#46 #60 #120#180
Segment Size (刀头尺寸)	80×8.3/14×10mm
Type (类型)	H (耐磨) /M (通用) /S (锋利)
Segment Type (刀头安装方式)	Welding (焊接)
Base	Iron (铁底)

### Frankfurt Abrasive for Processing Marble Slab TW22

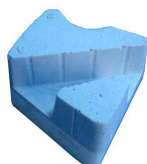
#### 大理石大板马蹄磨块

**TW2211 Magnesite (菱古土金刚马蹄) :**



Grit (目数)	#36 - #320, #400 - #1500
Working Height (工作高度)	H35
Type (类型)	H (耐磨) / M (通用) / S (锋利)

**TW2221 Resin (树脂金刚马蹄) :**



Grit (目数)	#120-#320, #400-#1500 Cleaner
Working Height (工作高度)	H35
Type (类型)	H (耐磨) / M (通用) / S (锋利)

**TW2231 Synthetic (复合金刚马蹄) :**



Grit (目数)	#120-#320, #400-#1500 Cleaner
Working Height (工作高度)	H35
Type (类型)	H (耐磨) / M (通用) / S (锋利)

**TW2232 Synthetic (复合金刚马蹄) :**



Grit (目数)	#120-#320, #400-#1500 Cleaner
Working Height (工作高度)	H35
Type (类型)	H (耐磨) / M (通用) / S (锋利)

**TW2241 Sponge (海绵金刚马蹄) :**



Grit (目数)	#600 #1000 #2000 #3000 #6000 #10000
Working Height (工作高度)	H12
Type (类型)	M (通用) / S (锋利)
Segment Type (刀头安装方式)	Bonding (粘接)
Base (底座)	Plastic (塑料)

**TW2242 Sponge (海绵金刚马蹄) :**



Grit (目数)	#600 #1000 #2000 #3000 #6000 #10000
Working Height (工作高度)	H12
Type (类型)	M (通用) / S (锋利)
Segment Type (刀头安装方式)	Bonding (粘接)
Base (底座)	Magnesite (菱古土)

**TW2251 5-Extra (草酸抛光马蹄) :**



Grit (目数)	#600 #1000 #2000 #3000 #6000 #10000
Working Height (工作高度)	H35
Segment Type (刀头安装方式)	Bonding (粘接)
Base (底座)	Magnesite (菱古土)

**Frankfurt Brush for Processing Marble Slab TW23**

**大理石大板马蹄刷**

**TW2311 Steel Brush (钢丝马蹄刷) :**



Grit (目数)	Hard/Soft
Working Height (工作高度)	H30 H35
Base Color	Black,Red,Yellow (黑红黄)

**TW2321 Steel Wire Brush (钢绳马蹄刷) :**



Grit (目数)	Hard/Soft
Working Height (工作高度)	H30 H35
Base Color	Black,Red,Yellow (黑红黄)

**TW2331 Mixed Brush (混合马蹄刷) :**



Grit (目数)	Hard/Soft
Working Height (工作高度)	H30 H35
Type (类型)	M (通用) /S (锋利)
Base Color	Black,Red,Yellow (黑红黄)

**TW2341 Abrasive Brush (研磨马蹄刷) :**



Grit (目数)	#24 #36 #46 #60 #80 #120 #180 #240 #320 #500
Working Height (工作高度)	H30 H35
Type (类型)	M (通用) /S (锋利)
Base Color	Black,Red,Yellow (黑红黄)

**TW2351 Diamond Brush (金刚石马蹄刷) :**



Grit (目数)	#24 #36 #46 #60 #80 #120 #180 #240 #320 #500
Working Height (工作高度)	H30 H35
Type (类型)	M (通用) /S (锋利)
Base Color	Black,Red,Yellow (黑红黄)